

STANDARD OPERATING PROCEDURES  
DIVISION OF COMPARATIVE MEDICINE  
UNIVERSITY OF SOUTH FLORIDA

SOP#: 100.3

Date Issued: 11/03

Date Revised: 9/24

Page 1 of 5

---

TITLE:

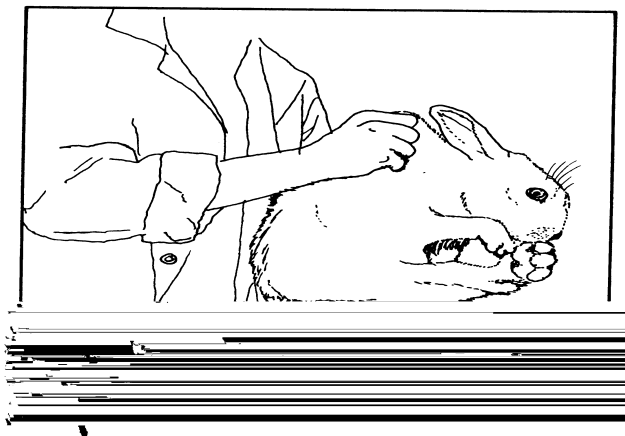
- d. Technician will notify the Facility Manager regarding any damage to crate or contents.
- e. Facility Manager will notify the Program Assistant of damaged or rejected shipments, or orders improperly filled (i.e., weight, age, number requested).
- f. Clinical Veterinarian will be immediately notified of health concerns or deaths occurring in transit.
- g. New animals are recorded on the Per Diem Sheet located in the Room Log Book.

## 2. Physical Examination

- a. A physical examination (PE)/general health evaluation is performed by the veterinary staff, or animal care staff, within 24 hours of arrival.
- b. Animal is removed from home cage and examined. Observations are recorded on the Arrival Status Sheet . The following parameters will be observed and recorded:
  1. ID number (if any) and or description
  2. Weight
  3. Body Temperature
  4. Heart or Pulse Rate
  5. Respiration Rate
  6. Capillary Refill Time
  7. Nails (trim if necessary)
  8. Teeth (trim if necessary)
  9. Ears
  10. Eyes
  11. Skin/Coat Condition
  12. An Impression of General Attitude and Condition
  13. Any Treatments Implemented
- c. A notation of PE having been performed is placed on the Progress Notes for each animal.

## 3. Handling and Restraint

- a. Removal from home cage:
  1. Grasp the scruff of the neck firmly with one hand.
  2. Support the hindquarters and back with other.



NOTE: Failure to adequately support the hind -quarters can result in injury to the handler and rabbit !

- b. Transporting the rabbit
    - 1. Place the head under the arm/elbow area.
    - 2. Support and control animal under hind-quarters with other hand.
  - c. Placing in restraint device or restraining for administration/collection of materials.
    - 1. Rabbit is held for transport.
    - 2. The top supporting hand is brought back up to grasp the scruff of the neck.
    - 3. Animal is lifted away from handler with other hand supporting the hind-quarters.
    - 4. Hind-quarters are gently placed with the restraint device.
    - 5. Head is lowered into position and device secured.
  - d. Removal from restraint device progresses opposite of above.
  - e. Return to home cage is performed in the same manner as removal from cage, in reverse (with hind-quarters entering first).
4. Feeding and Watering
- a. Refer to Sdol1ID 30 >>BDC -0.00]p8]TJ 03i0220.007 Tw0 10.076 0 Td ( )4(2.)T11ID 30.5 ( t



